

# METALLIC PAINTS & POWDERS

## BRISTOL STANDTEX METALLIC PALETTE



**Bristol StandTex Metallic Palette** The Silver is a best-seller with Flints for good reason [two swatches shown; the top on canvas, the bottom on a piece of PVC pipe]. Like all the Bristol metallics it is water-based with exceptional coverage and is ready to use. A unique feature of Bristol Paints which proves popular is that they can be mixed with the Bristol Primary Palette [see page 18] to create metallic colours which are very durable. Simply mix the paints together to the desired effect then add 25% of AquaPlus [page 23] to prevent the colour and metallic from separating. This range of metallics is also available in a durable high adhesion water-based polyurethane. Please phone for details.

Bristol Metallic Palette 100 ml	1 kg	3 kg	5 kg	10 kg
approx vol:	800 ml	2.4 L	4 L	8 L
£6.45	£23.42	£58.98	£83.60	£159.52
☞ Silver BRI91060	BRI11060	BRI31060	BRI51060	BRI21060
Bristol Metallic Palette 100 ml	1 kg	3 kg	6 kg	10 kg
approx vol:	800 ml	2.4 L	4.8 L	8 L
£6.45	£31.30	£83.78	£141.54	£227.97
Lemon Gold BRI91061A	BRI11061A	BRI31061A	BRI61061A	BRI21061A
Light Lem Gold BRI91061B	BRI11061B	BRI31061B	BRI61061B	BRI21061B
Mid Gold BRI91061C	BRI11061C	BRI31061C	BRI61061C	BRI21061C
Deep Gold BRI91061D	BRI11061D	BRI31061D	BRI61061D	BRI21061D
Antique Gold BRI91061E	BRI11061E	BRI31061E	BRI61061E	BRI21061E
Bronze BRI91061H	BRI11061H	BRI31061H	BRI61061H	BRI21061H
Copper BRI91061G	BRI11061G	BRI31061G	BRI61061G	BRI21061G
Gun Metal BRI91061N	BRI11061N	BRI31061N	BRI51061N	BRI21061N
Pewter* BRI91061J	BRI11061J	BRI31061J	BRI51061J	BRI21061J
Bristol full colour chart [at cost price]	BRICC			£16.00

\*Please note, the Pewter comes as 5 kg (approx 4 L), not 6 kg



**Bristol Standtex Metallic Collection Set** All ten of the metallic colours in the 100 ml size at a reduced price.

Bristol Metallic Collection Set	code	price
10 x 100 ml pots	BRI90004K	£60.10

## ROSCO OFF BROADWAY METALLIC PAINTS



**Rosco Off Broadway Metallic Paint** Water-based metallic paints which are economically priced. SPECIFICATION: Covers 8 - 9 m<sup>2</sup> per litre.

Off Broadway Metallic Paint	code	473 ml	code	946 ml	code	3.79 L
Silver	ROS25385	£20.00	ROS15385	£34.75	ROS35385	£116.75
Copper	ROS25386	£20.00	ROS15386	£34.75	ROS35386	£116.75
Gold	ROS25384	£20.00	ROS15384	£34.75	ROS35384	£116.75
Bright Gold	ROS25383	£20.00	ROS15383	£34.75	ROS35383	£116.75
Antique Gold	ROS25387	£20.00	ROS15387	£34.75	ROS35387	£116.75

See also Metallic Finishes and Spray Paints [page 34].

## ACRYLIC METALLIC PAINT



**Polyvine Acrylic Metallic Paint** Polyvine's metallic paint is produced without using metallic powders. The product has unusually good brushing and spreading properties making it a good choice for large areas such as walls. They can be tinted with Polyvine colourisers. The finish can be burnished with a soft cloth to a shine.



Polyvine Acrylic Metallic Paint	size	code	price
Pale Gold	500 ml	POL32075	£17.44
Bright Gold	500 ml	POL32085	£17.44
Antique Gold	500 ml	POL32095	£17.44
Copper	500 ml	POL32105	£17.44
Pewter	500 ml	POL32125	£17.44
Silver	500 ml	POL32115	£17.44

Everything is available to buy online! [flints.co.uk](http://flints.co.uk)

**ARDENBRITE PRODUCTS**



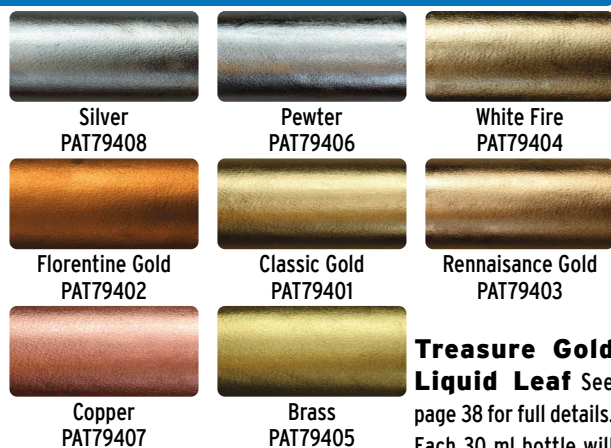
**Ardenbrite Metallic Paint** A range of high quality, quick-drying metallic paints, suitable for external and internal use. When used externally, they should be given a coat of protective glaze. May be used on wood, stone, expanded polystyrene as well as metal. Ready mixed for application by brush or spray. Touch dry in 15 minutes, hard dry in 3 hours.

Ardenbrite Metallic	125 ml	250 ml	500 ml
Silver	£16.98	£26.27	£48.05
Antique Gold	PAT7110	PAT7111	PAT7112
Green Gold	PAT7030	PAT7031	PAT7032
Sovereign Gold	PAT7100	PAT7101	PAT7102
Bronze	-	PAT7071	PAT7072
Deep Gold	-	PAT7021	PAT7022
Light Gold	PAT7010	PAT7011	PAT7012
Old Penny Bronze	PAT7090	PAT7091	PAT7092

**Basecoat** A water-based, fast-drying primer that improves adhesion.

Ardenbrite Quick Drying Basecoat	code	500 ml
	PAT73002	£11.37
Ardenbrite Glaze	code	1 L
Protective Glaze	PAT7203	£46.31

**TREASURE GOLD - LIQUID LEAF**



**Treasure Gold Liquid Leaf** See page 38 for full details. Each 30 ml bottle will

cover approx. 2 m<sup>2</sup>. Use the brush bath thinners at 15-20% to spray.

Liquid Leaf	code	30 ml	code	30 ml	
Silver	PAT79408	£9.97	Pewter	PAT79406	£9.97
White Fire	PAT79404	£9.97	Florentine Gold	PAT79402	£9.97
Classic Gold	PAT79401	£9.97	Renaissance G.	PAT79403	£9.97
Copper	PAT79407	£9.97	Brass	PAT79405	£9.97
	code	60 ml	code	250 ml	
Treasure Sealer	PAT79601	£9.57	PAT79604	£23.34	
Brush Bath Thinner	PAT79602	£9.57	PAT79603	£23.34	

**FLINTS METALLIC POWDERS**



**Flints Bronze and Aluminium Powder** Technically speaking these bright powders are actually termed "flakes". They are suitable for making

bright metallic paints when mixed with a glaze, Cellulose Bronzing Medium or Shellac [page 60]. If you require a metallic powder for mixing with polyester resin then refer to the specialist powders [page 120]. Opinions vary, but allow 500 g for 2.5 litres as a guideline.

Flints Metallic Powders	size	code	price	Tradeline 4+
Deep Gold [Orange/copper gold]	250 g	DPP500	£19.98	£17.98
Lemon [Medium yellow]	250 g	DPP050	£24.38	£21.95
Rich Gold [Pale slightly acidic yellow]	250 g	DPP259	£18.95	£17.05
Pale Gold [Pale slightly copper yellow]	250 g	DPP051	£19.35	£17.40
Natural Copper	250 g	DPP055	£18.95	£17.05
	code	250 g	code	1 kg
Silver [Aluminium]	DPP25712	£20.15	DPP2571	£67.80

First time users should ask for health and safety data sheets or download them from the "Downloads" section of flints.co.uk.

**BRONZING MEDIUM**



**Cellulose Bronzing Medium** Ormaline metallic paint medium for making metallic paints using the powders above. See also shellac-based Transparent Polish [page 60] which can also be used as an economical medium for the powders.

Cellulose Bronzing Medium	code	price
250 ml	PATBM2	£17.33
1 L	PATBM1	£51.43

See also Polyvine Glazes [page 55].

**METAL LACQUERS**



**Rylard Brass Lacquer [Incralac]**

This brass lacquer is used in many demanding situations for protecting such metals as brass and copper, and is intended for interior or exterior use. With an excellent balance of hardness, adhesion and film toughness, it has superb resistance to UV light and resists yellowing and loss of gloss and clarity as it ages. The applied film also provides excellent flexibility and resistance to cracking and flaking. Brushes can be cleaned with Cellulose Thinners [page 61]. See also Polyvine Crystal Clear Lacquer [page 38].

Rylard Brass Lacquer	size	code	price
Can	500 ml	PATBL500	£17.85
Aerosol	400 ml	PATBL400	£23.29



## GRAPHITE POWDER

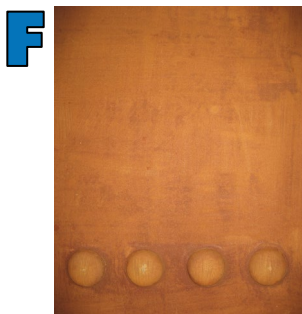


### Flints Graphite Powder

Graphite powder is a crystallised form of carbon. This Flints Graphite Powder is particularly fine and is warm grey in colour. It is excellent for lubricating lock mechanisms. Mixed with emulsion glaze and emulsion paint it will, when brushed onto a surface, resemble a lead/metallic surface, especially if lightly abraded or polished. It can also be used as a powder with polyester resins to give an aged metallic effect. Do not use graphite powder near electrical equipment such as weighing scales, calculators and computers as it may cause short circuits. See also Liberon Iron Paste below.

Flints Graphite Powder	code	200 g	code	2.4 kg
	PATGP0200	£5.95	PATGP2400	£57.14

## IRON POWDER



**Iron Powder** This fine iron powder will rust quickly with water and is excellent for realistic rust effects. For best results apply a coat of a matt glaze such as Polyvine Dead Flat [page 23] onto your base colour. While the glaze is still wet sprinkle liberal quantities of iron powder into the glaze and spray with vinegar using a Hand-held Mister [page 94]. The iron powder will immediately

begin to rust. Realistic-looking riveted steelwork can be achieved by glueing our Wooden Rivets [page 98] to MDF and applying some flat glaze around the edges and letting it run. Sprinkle with iron powder, spray with vinegar and it will look like rust is weeping from the rivets. Excess powder can be swept off when the glaze is dry. We can also recommend trying the HATO@Rust Effect on page 32.

Iron Powder	code	1 kg	10 kg+
	DPP258	£15.85	£14.28



This lovely rusty crab was made by Jack our Product Manager using Worbla [page 98] and painted with HatoRust [page 32]

See also the Rust Effect by Dirty Down [page 32] and Spray [page 69] and HATO@Rust [page 32]

## METALLIC PASTES



**Liberon Iron Paste** This paste will restore the appearance of cast and wrought ironwork such as grates, fire surrounds and fire irons. For scenic use it can be used on firebacks, stoves, boilers and pipes but it shouldn't be used on working wood-burning stoves or radiators. Apply sparingly with a brush or cloth and buff up after at least 4 hours with a cotton cloth. Makes wooden scenery look like solid cast iron. 250 ml is enough for up to seven fireplaces.

Liberon Iron Paste	size	code	price
	250 ml	PAT396	£13.33

## METALLIC SPRAYS

Flints stocks several makes of metallic spray paint all chosen for their brilliance and evenness of finish. The range covers most metals. Coverage will depend on the surface being sprayed but as a rough guide a 400 ml can will normally cover about 2 m<sup>2</sup>.



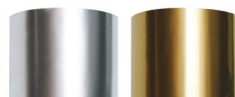
Gold PATKOB045 Copper PATKOB046 Silver PATKOB047



**Kobra Metallic Spray** A high "solid" content ensures great rapid coverage on any surface. It is perfect for painting on canvas, wood, metal, glass, paper, card, plastic, concrete, brick and more. We are particularly impressed by the gold, which is the best we've tried. Flints stocks a selection of Kobra Sprays in vibrant colours and fluorescents. See page 67.

Kobra Spray Paint	code	400 ml	Tradeline 12+
Gold	PATKOB045	£5.35	£4.80
Copper	PATKOB046	£5.35	£4.80
Silver	PATKOB047	£5.35	£4.80

**Kobra Spray Nozzles** Flints stocks a variety of cap sizes. Use the "fat" nozzle to quickly cover a large area with intense colour and the "skinny" nozzle to write, see page 67.



The swatches and below are photos taken by Flints of the actual products sprayed onto vinyl pipe.

**Air Craft Metallic Spray** Extra quality including an excellent silver chrome. Many of our clients consider the Air Craft Silver Chrome to be the most realistic chrome aerosol.

Air Craft Metallic	code	400 ml	6+
Silver Chrome	BOL950010	£6.67	£6.03
Gold	BOL950002	£6.67	£6.03



**Plasti-Kote Brilliant Metallic Spray** By popular demand!

Plasti-Kote Metallic	code	400 ml	6+
Gold	PAT160	£9.32	£7.95
Silver	PAT161	£9.79	£8.35
Copper	PAT162	£9.79	£8.35



**Decoration Metallic Spray** An extensive range of metallics.

Decoration Metallic	code	400 ml	Tradeline 12+
Brite Gold	BOL9002	£8.45	£7.05
Brite Silver	BOL9003	£8.45	£7.05
Coppertone	BOL9004	£8.45	£7.05
Brass	BOL9032	£8.45	£5.85
Antique Gold	BOL9085	£8.45	£7.05